

# Dummy Stamps

Issue 34

A Newsletter Covering British Stamp Printers' Dummy Stamp Material

Quarter 2, 2014

## *The First Harrison "Dummy Stamps" from High Wycombe for Sale*

*Interesting trial piece from the first months at High Wycombe factory*

British specialist stamp dealer Candlish McCleery of Worcester is currently offering for sale an item of great importance to the first British photogravure postage stamps of Harrison and Sons. It may still be unsold, so enquire at [www.candlishmccleery.com](http://www.candlishmccleery.com)

The item comprises an album page with a strip of five whole and two additional partial images of, presumably, a film or stage actress of the period. She could, of course, even be an employee of Harrison, as Enschedé used (a) the daughter of its managing director (the image that is wrongly referred to as being the child film star Shirley Temple) and (b) an unknown woman (both shown at foot of page). These two dummy stamps appeared around the same time as the Harrison item. Does anyone recognise either of the unidentified women?

The page is annotated as being from the Hassan Shaida collection of British stamps, much (all?) of which was sold by auctions in the 1990s. A description of the piece and the story behind it is ably told on the album page write-up, which is reproduced below with permission of the stamp dealer.

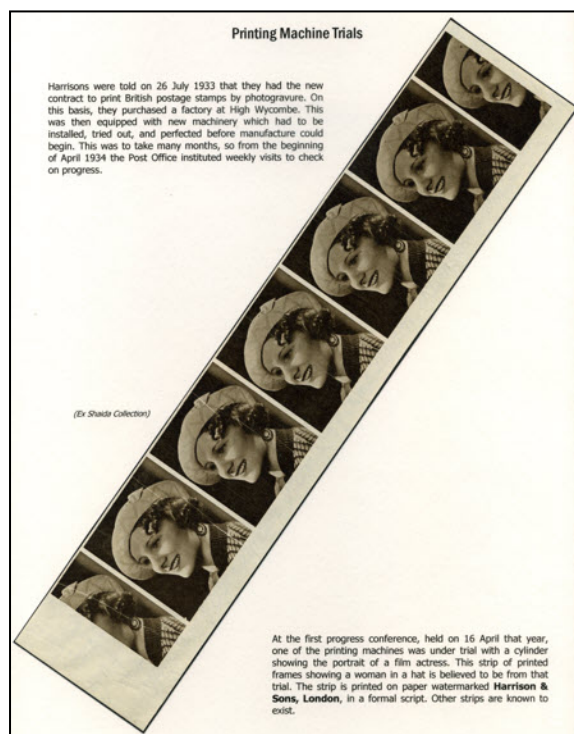
Harrisons were told on 26 July 1933 that they had the new contract to print British postage stamps by photogravure. On this basis, they purchased a factory at High Wycombe. This was then equipped with new machinery which had to be installed, tried out, and perfected before manufacture could begin. This was to take many months, so from the beginning of April 1934 the Post Office instituted weekly visits to check on progress.

At the first progress conference, held on 16 April that year, one of the printing machines was under trial with a cylinder showing the portrait of a film actress. This strip of printed frames showing a woman in a hat is believed to be from that trial. The strip is printed on paper watermarked **Harrison & Sons, London**, in a formal script. Other strips are known to exist.

The final sentence is a little unclear, in that the 'other strips' could conceivably be of other people depending on how you read it, so this is maybe something to look for, especially if your find is on H&S script watermarked paper! ☒

(right) Enschedé. Daughter of MD.

(middle) Enschedé. Unknown woman.



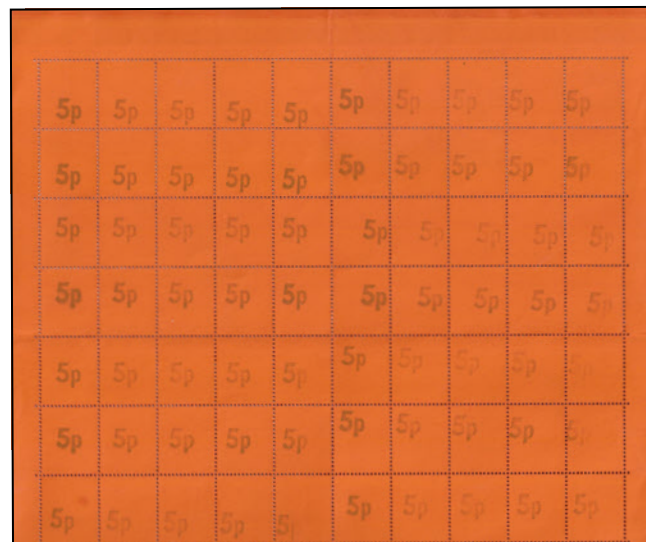


## Decimal Currency PO Training Stamps

Do other values\* exist apart from the two shown here?

A full sheet of 200 of the previously known Harrison printed orange sample stamp usually used for booklet dummy creation has recently come to light, but....

Copies are individually handstamped 5p and were used as a part of the decimal training of postal counter staff. It is similar to 3 1/2p copies on the light green paper only found at BPMA. ☒



(right) The BPMA-held 3 1/2p training label.

(middle) The 'new' 5p version.

(far right) The first 7 rows of the sheet of 200 orange labels.



\* There are, of course, the well known 2p, 2 1/2p, 3p, 3 1/2p and 4p values printed in photogravure, as generally used nationwide.

## Thomas De La Rue Effigy on Dummy Stamp in Orange and Green

On sale in France as singles at €25 per copy, a full sheet from England cost far less than that for 50 copies!

Having commented on a lack of this orange/green DLR dummy stamp, a full sheet has now turned-up, two or three copies of which are affected by foxing. ☒





## DLR Delacryl Sample Album of Issued Stamps

Unusual invalidation used

When De La Rue launched Delacryl (its offset process) they undertook promotions, including an album containing several of their issued stamps and MS.

Unusually, stamp corners were clipped, presumably by the use of scissors. However, the miniature sheets had corners removed with a knife between perforations.

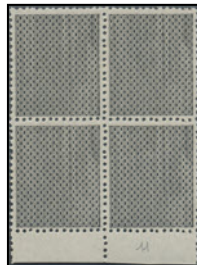
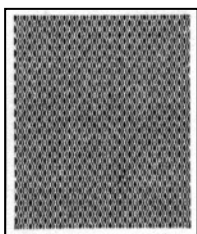
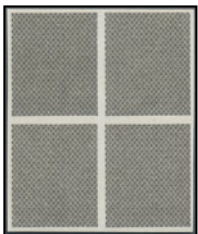
A typical page and knife cut are shown alongside. ☒



## DLR Italian Dummy Stamp

Background trials undertaken

In 1863 DLR tested the security background for stamps of Italy. Only one sheet of 400 was produced, signed and certificated by Raybaudi. CEI catalogue value €24,000. ☒



## Waddington Rio Congress

Mystery lettering in left hand margin



## DLR £10 KEVII Dummy Stamp

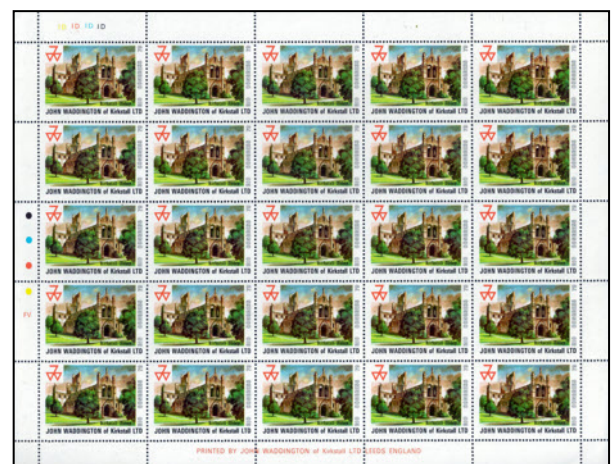
High value keyplate design

1906-12. The original universal colour trial, denominated £10 and inscribed THOS. DE LA RUE & Co. for Straits Settlements.

Imperforate on Multiple Crown CA watermarked paper with large part original gum.



Sale estimate was \$500. ☒



Any idea what the FV lettering means, please? ☒



# Harrison and Sons Factory Tour Marked its 1950 Bicentenary Year

A set of Guide Notes appeared at auction recently and was snapped-up by a reader

In December 1950, Harrison held factory tours for family and friends of its staff. Although no dummy stamps unique to the events are known to have circulated there was an attractive souvenir brochure, plus the guides on the tours were issued with notes to help them explain what visitors were seeing.

It is unlikely that more than a single copy of these notes exists today and the publication was recently shown to your compiler by a regular reader and expert in all things Harrison. These guide notes are reproduced below as they contain interesting operational facts that are potentially not available anywhere else. ☒

Time 11 minutes

When leaving the canteen point out that new chimney is 110 ft. high.

**POWER HOUSE**

**Vertical Oil Tanks**

Large one 12,000 gallons  
Small one 5,500 gallons

**Davey Paxman Boilers**

Working Pressure 180 lbs.  
We use 75 tons of coal and breeze per week

**Engines**

Two steam engines.  
Four diesel oil engines.

We use 1,100 gallons diesel oil per week and 1,000 gallons of water for cooling  
Power generated per week is 54,000 kilowatts.

**WHITE PAPER WAREHOUSE**

Between 500 and 600 tons white paper stored. (Reels and flat sheets).

**STAMP DEPARTMENTS**

**Gumming (8 minutes)**

We use Pure Gum Arabic from the Anglo-Egyptian Sudan An exudant from the acacia tree.  
Three gum mixers One at 200 gallons, two at 100 gallons.  
Four settling tanks and one feed tank to gumming machines  
Gum is fed by gravity through filtering press.  
Point out cleanliness of gum.  
Gum is dried on machine by hot air and heated drum.  
Cold water roller cools paper before re-reeling.  
(Show visitors water mark on paper)

**Fracturing Machine**

Knives break up gum on back of sheet.

**Calendering Machine**

Smooths surface of paper ready for printing.

Page 1

**PROCESS DEPARTMENTS**

**Cameras (Time 2 minutes)**

Four Process cameras.  
One step and repeat camera.  
Two enlargers.  
All kinds of negatives and positives made on glass and film also some paper negatives.

**Retouching (Time 3 minutes)**

Work done to bring out highlights which may be the camera cannot do.  
Special lighting equipment. The large inspection table is for balancing up sets of positives.

**Planning (Time 4 minutes)**

8 tables where each job is collated into position.  
Job is planned and set out here as you see the finished article, except that it is in reverse.

**Carbon Printing (Time 5 minutes)**

Wok is applied on to copper plates by means of carbon tissue.  
Show tissue sensitized and unsensitized. The screen is added here which may be 200, 175 or 150 cells per inch.  
The moving lamps eliminate any defect showing in a particular spot.  
One laying machine is used for plates and one for cylinders.

**Etching (Time 5 minutes)**

Each cylinder is painted out with bitumen paint to protect the copper not required to be etched. The etching order is from shadows up to highlights.

**Engraving and Fine Etching (Time 5 minutes)**

Department for finishing stage of the work prior to machine proofs. Any faults in the previous etch are rectified here by localized etching and engraving.

Page 4

**Printing Machines (Time 6 minutes)**

Four 22-inch wide machines and one two colour 11-inch wide machine.  
Ink is fed from below from ink mixers.  
Doctor blades scrape surplus ink off cylinder.  
Numbering unit numbers both sides of sheet.  
Physical count taken afterwards to check machine count.  
Two machines produce work for sheets.  
Two machines produce work for Rolls and Books.  
Two small wharfedale machines for cancelling waste sheets —note black lines across sheets.

**Rereeling (Time 2 minutes)**

Machines condition and trim paper ready for printing machines.  
Rereeling, Perforating, Books and Rolls Rooms are air conditioned.  
Waste paper sent back to paper mill for destruction.

**Rotary Perforators (Time 5 minutes)**

Show visitors the confetti trays underneath machines.  
2 cwt. confetti per day from all perforating machines.  
Three comb blocks contain nearly 3,000 pins.  
Two machines perforate sheets for books, trimming all edges ready for collating.  
One machine perforates sheets and one machine perforates rolls.

**Sheet Perforators (Time 3 minutes)**

7 sheets pinned at a time. Point out accuracy of frame—the bottom sheet perforating exactly the same as top. (Show them this.)  
Four machines are two comb and two machines single comb.  
Point out here that sheets are delivered from printing machines in 960 stamps on a sheet, perforated in 480 stamps and examined in 240 stamps.

Page 2

**Depositing and Grinding (Time 3 minutes)**

The plates are manufactured elsewhere but all cylinders are deposited with copper in our own factory.  
A 5/1000 "Skin" is largely used which can be stripped off and cylinder redeposited with another "skin."  
Chrome being much harder than copper, any cylinder used for a long run is chromium plated before running.  
Some cylinders are "ballard" copper which is done by use of an agate stone. The stone rolls copper during deposition.

**MACHINE ROOM (Time 15 minutes)**

Point out size of various machines.  
The battery of L. & M. 4s used for colour work. Printing from plates. Sheets automatically fed into machines.  
The smaller machines (L. & M. 7s) are used for training apprentices in their early years. Sheets hand fed in machines.  
Machine in cage is used for Colonial postage stamps.  
Palatias are larger machines printing from cylinders.  
Point out Litho machines on which we do specialized work not suitable for Gravure.  
Albert Rotary. 72-inch wide with folding unit on machine.  
Five colour Halley machine. Mainly used for household cleansing labels, such as Vim and Mirro.  
Timson machine is used for printing wrappers and Post Office Magazine, etc.

**BINDERY (Time 10 minutes)**

Point out guillotines and sequence of any work running at the time.  
Miss Avery will be available to explain if necessary.  
Point out folding machines. Some folding by rollers and some by knife action.

Page 5

It should not come as a surprise that Harrison went to the trouble of printing these Guide Notes in what was probably a print run of no more than, say, 20 copies, as there would have been no PC printers or photostat machines back then!

**Book Room (Time 10 minutes)**

Room laid out in order of work as follows :

Collating into frames.  
Checking by Harrison girls.  
Middle Stitching.  
Check by Post Office girls.  
Side Stitching.  
Cutting frames into single books on machine.  
Examine, Count and Banding in one operation.  
Check by Harrison girls for correct number in bundles.  
Checked by Post Office girls.  
Packed by Harrison girls.  
1,250,000 books produced per week.  
For purpose of checking the books are kept in units of 4,000. Spare tray is kept on one side in order to make up good trays should any of them be waste.  
Small machine on left of room punches holes through waste books for destruction.

**Rolls Room (Time 5 minutes)**

Girls examine the rolls and insert wrappers at correct place.  
Post Office girls check them for right number of panels according to make up of Roll.  
Rolls are tightened up, bands secured, tied and sealed before delivery.  
(Specimens of different sized rolls will be available if required)  
There are 27 different kinds of rolls, the bulk of which are used in stamp vending machines.

**Examining Department (Time 4 minutes)**

Girls examine sheet in 4 sections. Twice on the front and twice on the back.  
Girls will point out why sheets are turned out as waste.  
The sequence of work :  
i Sheets counted into room.  
i Examined.  
i Counted and work changed.  
i Re-counted and packed for delivery to G.P.O.

Page 3

**LETTERPRESS DEPARTMENT (Time 14 minutes)**

**Composing**

Hand composing which has been done this way since the 15th century.  
Various sizes of type face can be pointed out.  
Work carried out here is mostly periodical and book work. Some of the periodicals are Iron and Steel, Chemical Transactions, G.P.O. Magazine, Home Words, etc. A directory is done every two years which runs into 2,000 pages. At the present time the Voting List is in hand, this amounts to about 250 pages and has to be set, proofed and printed within a period of five weeks.

**Keyboard**

The keyboard of this machine is the same layout as that of the typewriter except that it contains five and sometimes seven alphabets. An operator will touch as many as 10,000 keys per hour.

**Caster**

Here the type is cast. You will notice the metal pot, this is heated and kept at a temperature of 725 degrees. The metal is driven through the mould by the action of a pump.  
The die-case contains 225 matrices. These machines cast an average of 8,000 separate characters per hour.

**Readers**

When the type comes off the casters a proof is taken and this is sent to the readers to be read for any errors.

**Machine Room**

Machine labelled up showing operation of machine will be prepared  
Perforators print both sides of sheet in one operation.  
Point out two lots of formes, rollers, etc.

Page 6



# Walsall Litho and Samuel Jones's First Day Self-adhesive Stamp Cards

Attractive postcards and a folder were produced to help promote the early days of peel-and-stick stamps

Not dummy related, but an interesting group of promotional items that can be difficult to get hold of. ☒

## WALSALL LITHO



### AIRMAIL FROM SIERRA LEONE

GREETINGS! ON ISSUING DAY OF WORLD'S FIRST FREE FORM SELF-ADHESIVE POSTAGE STAMPS — FEBRUARY 10TH, 1964

Yes! the card does come from SIERRA LEONE but the factory pictured is in England, where, by commission of the Government of Sierra Leone, the first ever, free form self-adhesive postage stamps were printed.

Please keep the stamp, it could become quite a collector's piece. (remember the Tonga gold coin stamps?) We hope it will remind you that "WALSALL LITHO" are not just quality printers — they are renowned for the impossible and extraordinary — and straightforward down to earth printing too!

W.L.Co. Ltd.

ADDRESS

Cannon (Holdings) Limited,  
Publicity Department,  
Cannon Factory,  
Deepfields,  
Bilston,  
Staffordshire.  
ENGLAND.

Sierra Leone, The First Self-adhesive Stamp, 10 February 1964.



JOHN F. KENNEDY

### AIRMAIL FROM SIERRA LEONE

ON ISSUING DAY OF PRESIDENT KENNEDY COMMEMORATIVE SELF-ADHESIVE POSTAGE STAMPS—MAY 11TH, 1964

SIERRA LEONE — pioneer of the World's first free form self-adhesive postage stamps — demonstrates respect and admiration for the late President of the United States, John F. Kennedy by honouring his memory on the first personal commemorative issue of these extraordinary stamps.

"WALSALL LITHO", as the producers are honoured and proud to be associated with this history making venture and want you to share in it by accepting this first day cover of the new issue.

W.L.Co. Ltd.



Kendal Milne & Co. Limited,  
Deansgate,  
Manchester, 3,  
ENGLAND.

Attention of Mr. W. Bayliss.

Sierra Leone, John F Kennedy Memorial Issue, 11 May 1964.



### AIRMAIL FROM SIERRA LEONE

FIFTH ANNIVERSARY — WORLD'S FIRST FREE FORM SELF-ADHESIVE POSTAGE STAMPS  
POSTAL HISTORY 1964 — 1969

Five years ago, from SIERRA LEONE, we sent you an epoch making first day cover bearing the first Free Form Self-Adhesive postage stamp in philatelic history. Today we send you another to commemorate the FIFTH ANNIVERSARY of that famous event.

"WALSALL LITHO" are proud to have produced that first stamp and to see their offspring, WALSALL SECURITY PRINTERS LTD, carry on serving Sierra Leone, having been responsible for all their remarkable self-adhesive stamps — including the one on this card — ever since. Thus, we continue to assist Sierra Leone in its world lead in this modern philatelic advance. With this memento we wish you to share with us the joy of this great anniversary.

W.L.Co. Ltd. and W.S.P. Ltd.

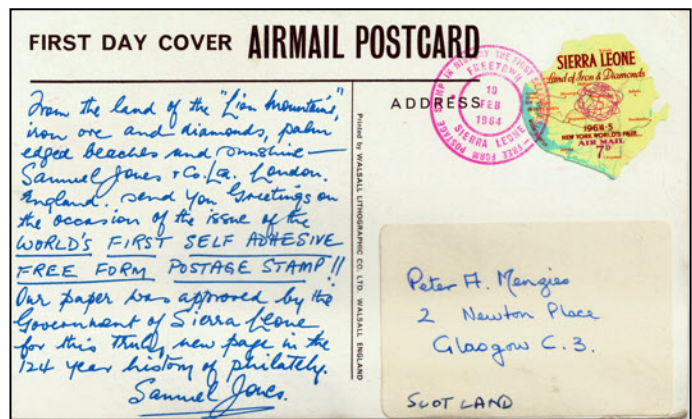


GREAT BRITAIN

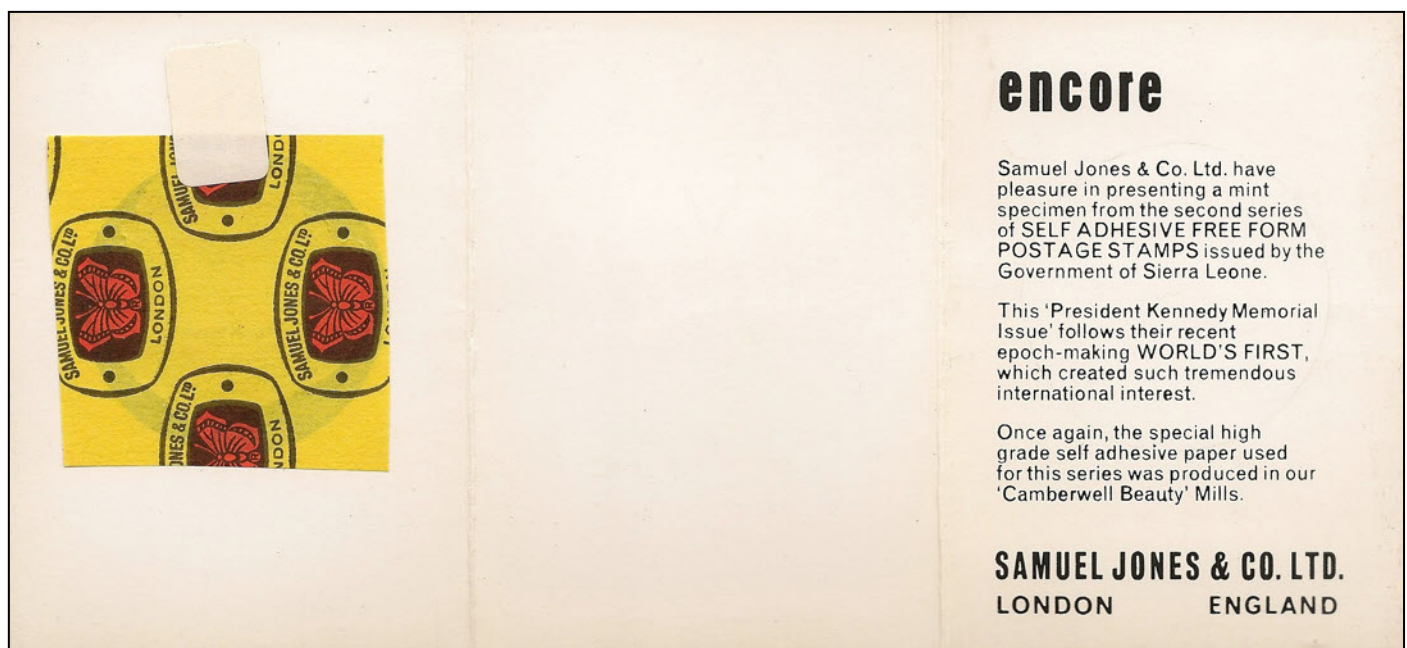
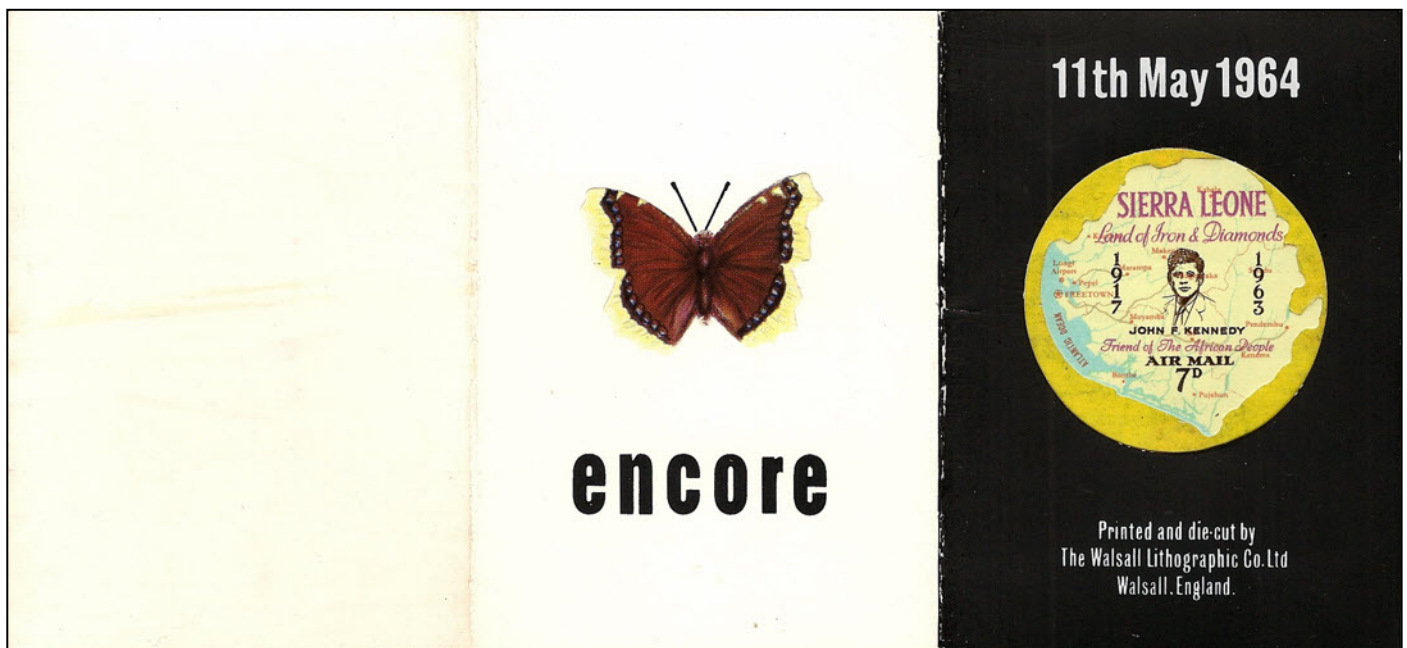
Sierra Leone, Five Years of Self-adhesive Stamps, 1 March 1969.



## SAMUEL JONES PAPER



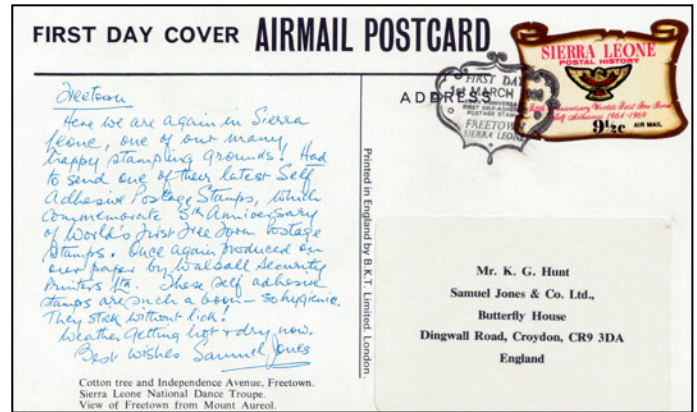
Sierra Leone, *The First Self-adhesive Stamp*, 10 February 1964.



Sierra Leone, *John F Kennedy Memorial Issue*, 11 May 1964.

There does not appear to have been a Samuel Jones postcard for the Kennedy issue. Instead, a very small folder was produced with a mint sample of the issued stamp and a self-adhesive Camberwell Beauty butterfly sticker affixed.





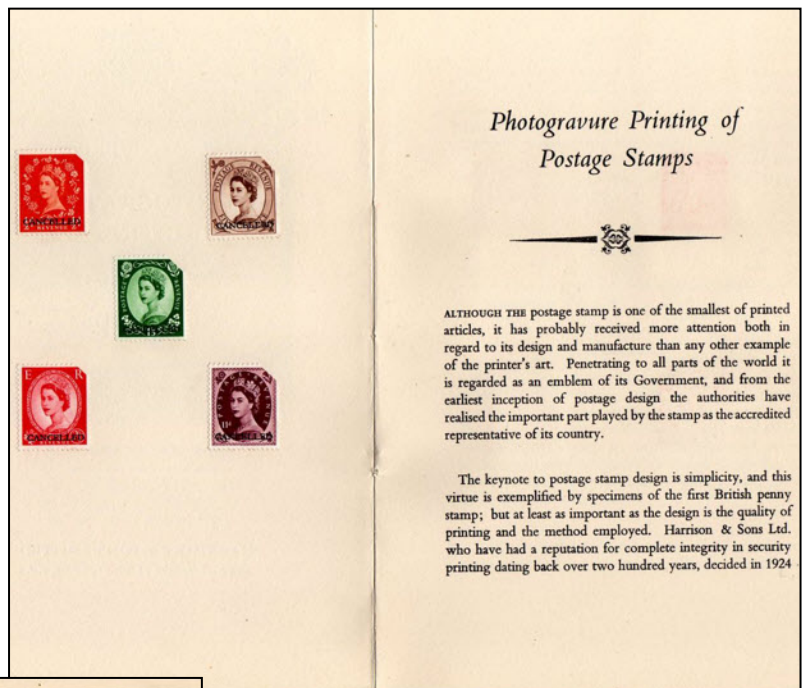
**Sierra Leone, Five Years of Self-adhesive Stamps, 1 March 1969**

## Harrison 'Photogravure Printing of Postage Stamps'

Publicity booklet contained dummy stamps

A small booklet entitled "Photogravure Printing of Postage Stamps" with a red flock cover was produced around 1954 as a promotional item for clients.

If lucky enough to obtain a complete one, it contains six Wilding stamps clipped on one corner each bearing a CANCELLED overprint. Your compiler has a copy, but sadly his was from a former Harrison director and was without any stamps within, reducing...



...not just any potential financial value, but also dramatically reducing its philatelic interest as well.



Fortunately, a reader was able to supply scans from his copy revealing the dummy stamps enclosed within the publication, which is rarely found on offer through dealers or online auction sites. ☒



## 1911 DLR Britannia Head and King George V Head in pair

A rare opportunity....



British Stamp dealer Andrew G Lajer was recently offering an interesting vertical pair with the top stamp being a King George V Downey Head (from the sheet of 48 where only twelve had the GvR head), se-tenant with one of the well-known De La Rue Britannia head dummy stamps.

Go to the link below if interested in purchasing, always assuming that it is still unsold of course.

[www.andrewglajer.co.uk/1911-de-la-rue-britannia-head-interpau-imperf-pair.html](http://www.andrewglajer.co.uk/1911-de-la-rue-britannia-head-interpau-imperf-pair.html)

This attractive pair bore a price tag of £2,500 for what is a rarely seen item, particularly with the pillars attached. ☒

## 1885 De La Rue Stamp Booklet Dummy Stamps

On offer by a British stamp dealer at £300

Imperforate in green, blue & dark grey with four fine margins each mounted on ledger page, these were used for booklet trials. ☒



## 'Hughenden Quarter' Starts to be Built on the Old Harrison Site

All remnants of Harrison are to be finally removed

A development of 97 properties have started to be built on the site of the old Harrison stamp printing works in Coates Lane, High Wycombe.



[www.careysnewhomes.co.uk/development/hughenden-quarter/](http://www.careysnewhomes.co.uk/development/hughenden-quarter/)

Sited adjacent to Hughenden Park on the north side of High Wycombe, the development will offer one to four bedroom properties and include "a feature crescent of Regency style townhouses overlooking the picturesque Hughenden Park and a contrasting range of contemporary family homes and apartments"

At least these new homes look as if they will be constructed to a high standard by Careys and sadly 'progress' cannot be halted.

While this news is not related to dummy stamps per-se, Horsenden Manor is close-by and has been featured within these pages previously (DS27) owing to the Christmas stamp produced by one of the Harrison family. A sheetlet of four labels can be depicted below thanks to reader Derek Weston. ☒





## Harrison Telegraph Forms from the 1880's

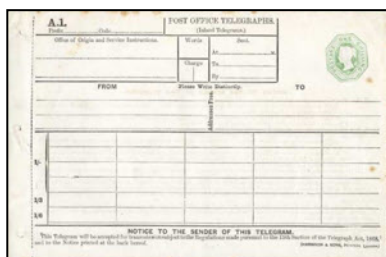
Interesting three-some surface on the web

Mark Bloxham Stamps ([www.philatelie.co.uk](http://www.philatelie.co.uk)) had for sale at the time of compiling this issue, three telegraph forms printed by Harrison. These were part of the first two contracts that the company received from the Post Office and, while not dummies, are of interest to anyone researching this period of the history of Harrison and its output.

Not being a specialist in the production of these items, it is unclear to your compiler if the embossed stamp element would have been printed by Harrison or perhaps overprinted elsewhere at a later date.

### 1882. One Shilling Green Octagonal:

Die inscribed 'POSTAGE / ONE SHILLING'. Sold singly. This printing must have been from the initial 1881 contract that the company won.



Die dated 5 1 82.

Imprint at bottom right:  
(HARRISON & SONS,  
PRINTERS, LONDON)

Space for 30 words.

### 1885. Six Penny Purple Octagonal:

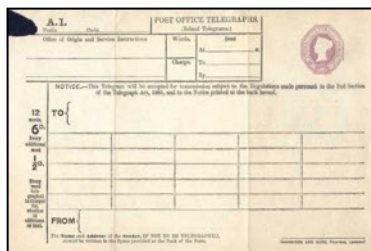
Die inscribed 'POSTAGE / SIX PENCE'. Sold singly and in books. This printing is from the 1885 second contract that the company won.



Die dated 5 10 85.

Imprint at bottom right:  
(HARRISON AND SONS,  
PRINTERS, LONDON)

Space for 30 words.



Die dated 5 10 85(?)

Imprint at bottom right:  
(HARRISON AND SONS,  
PRINTERS, LONDON)

Space for 25 words.

The House of Harrison states that 250 million a year were required (a big order for its time) which, if stacked in a pile, would be six miles high! ☒

## Major Hurdle Regarding Ownership of Jessica Ennis Trial Stamp

Stolen property makes purchase unwise

Thanks to Ian Billings, the official version of the story behind this trial dummy stamp is repeated here, having first appeared on his interesting blog at <http://blog.norphil.co.uk/2014/02/london-2012-olympic-ennis-variety.html> earlier this year.

### OFFICIAL STATEMENT FROM ROYAL MAIL

*"This is not an official Royal Mail stamp but was part of the testing done with printers some months before the London Olympics. All printers were under instruction to destroy such printed items and we do not have any knowledge as to how the example came to be on the auction site. However, as this example is Royal Mail property and never intended for sale it has been removed from the auction site."*

There is no mention as to whether copies sold by the vendor were being demanded back by Royal Mail, or which of the printers had a member of staff who was responsible for the theft of these items.



The source image is currently available to view at <http://www.dailymail.co.uk/sport/olympics/article-2161113/London-2012-Olympics-Peter-Keen-says-Beijing-gold-medal-haul-burden-Team-GB.html> but as it is copyright to AFP/Getty Images it cannot be depicted here. It is always interesting to see what gets left off a photograph when a stamp is cropped in such an unusual way as the 2012 Olympic Games series.

The vendor had stated at the time of the 'discovery' of a pane of 24 that the stamp is "a major error which is sure to become a future all-time classic". With, or even without, hindsight, to call it a major error is rather naive. ☒



## A New NCR Post and Go Vending Test Strip

2nd class version now found

A vendor on eBay recently sold a strip of three of the 2nd class Post and Go Machin design with the test printing for the Custom VK80-300 printer housed within the new NCR brand of machine.

This item matches the 1st class version that was depicted in *DS33*.



At the time of writing, pictorial designs (such as the spring flowers series of six designs and the Union Flag issue) had not been seen utilised in the new machines. NCR models are rapidly rolling-out, generally as replacements for the relatively short-lived Wincor Nixdorf equipment, but also at new sites that never had the earlier incarnation. ☒

## De La Rue's 'Postscript' Stamps Newsletter Surfaces

Have you seen any further copies?

A reader of *Dummy Stamps* kindly sent to your compiler a copy of issue one of a De La Rue newsletter called *Postscript*, the A4 masthead for which is depicted below, albeit much reduced.



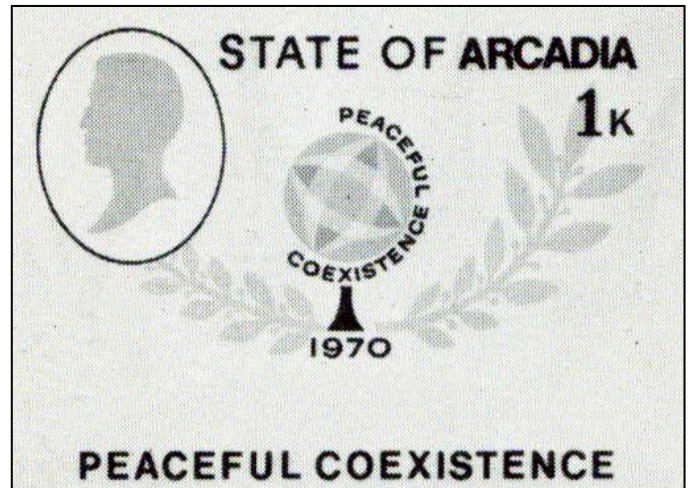
Its coverage was exclusively about stamp printing and design related matters and it contains much of interest within its four black and white sides. An example of the type of feature contained within is detailed in the next column.

It is assumed that this was a fairly short-lived publication, as it was previously unknown to those collectors who have an interest in such matters. So, can anyone possibly help by supplying scans or photocopies of any other issues, please? ☒

## Good and Bad Design According to De La Rue in 1970

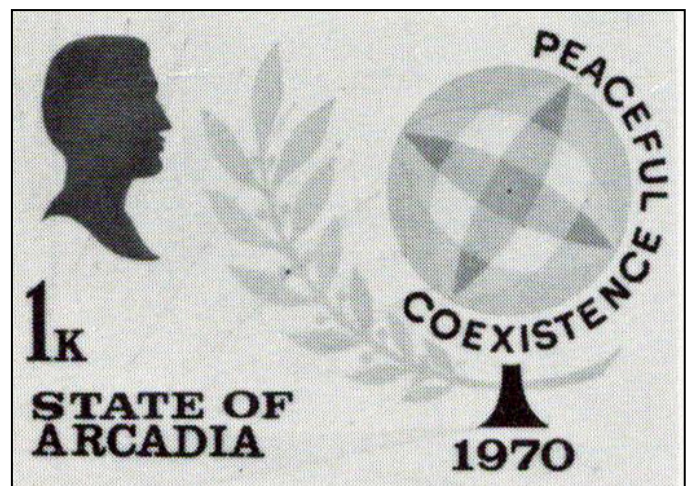
DLR promotes its postage stamp design services

What constitutes good or, for that matter, bad design? It is assumed that you will have your own views on the matter; certainly your compiler has. Well, so did De La Rue back in 1970. Indeed, it went to the trouble of creating both types for readers of its newsletter *Postscript* to ponder over.



Bad design.

First, they tackled bad design in their imaginary dummy stamp design above. The problems here are that elements are, to quote: "*confused, disjointed, difficult to read and ignore the demands of the minuscule medium*".



Good design.

They then reassembled elements for a more pleasing design where: "*small individual changes produce a stamp which is consistent in its proportions and which 'reads' easily*".

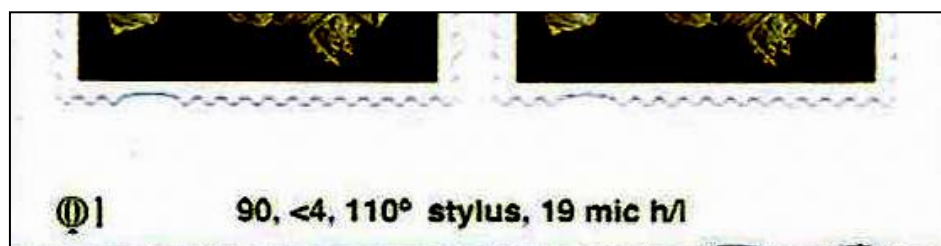
Don't look for these as they did not progress to the printing press stage, but an interesting exercise. ☒



## House of Questa 2nd Class Gold Machin Stamp Booklet Trial Found

Unrecorded colour seen for this unissued Machin NVI stamp

A reader advised that this booklet was recently sold as singles at the price of £250 per stamp, making it a £3,000 booklet prior to it being split-up. The outside front and outside back covers are devoid of any printing, so are not shown here. ☒



(top) The pane of 12 gold Machin stamps in the colour of the issued first class value.

(left) The unusual marginal text. The scan has been rotated and darkened to more easily show off the text.

## Questa's Badges for (Big) Kids

Seen more in the collections of grown-ups than children!



(above)  
The generic badge, as handed out at several stamp exhibitions where House of Questa was in attendance.

(right)  
The special version that commemorated 30 years of the company in 1996. This one is far harder to find.



## 2012 Dummy Stamp Found Used

Kiloware Olympics stamp trial offered by stamp dealer

It would be easy to create a used copy if you had a mint example to spare, but why would you, as mint copies are quite expensive? Maybe some copies were used by non-collectors 'genuinely', perhaps in total ignorance. It sold for a low price of £4.99. ☒  
(Stop press: Further copies later went for between 99p -£10.)



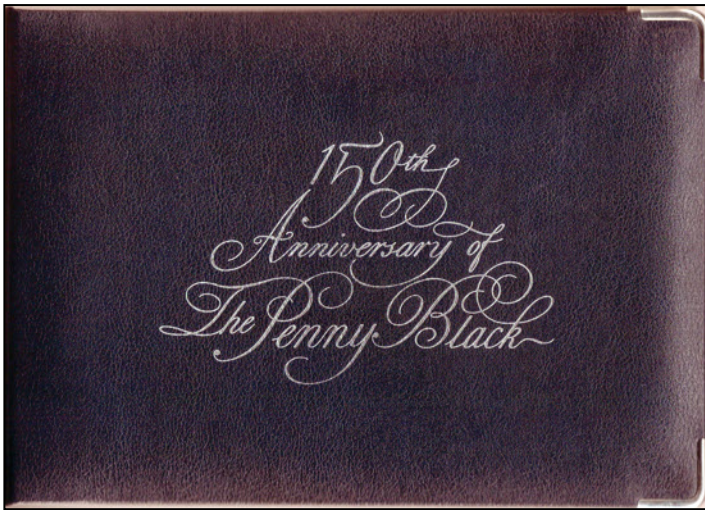
The so-called 'Nelson' printing.



## *Harrison Supplied Royal Mail with Oversized 1990 MS for Palmares*

*Press sheets were cut differently to normally issued sheets*

In 1990, Royal Mail actively commemorated the 150th anniversary of the first postage stamp, which was the Penny Black of course, with various products.



One popular item was the miniature sheet bearing the 20p double-headed Victoria/QEII design together with an intaglio reproduction of the Penny Black, plus seahorses and Britannia background.

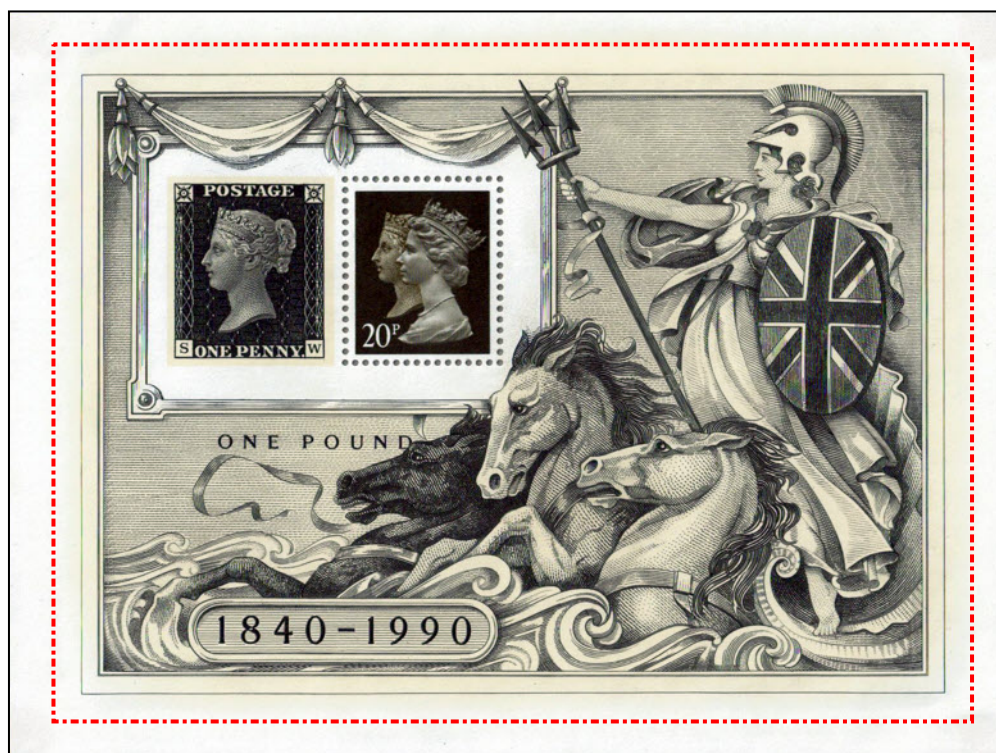
This sheet, plus a medallion, were incorporated into a lavish presentation folder mimicking navy leather, plus silver coloured protective corners and grey flock interior, as shown in the previous column. It was a gift to the guests who attended a Post Office reception put on for the anniversary.

That was 24 years ago now and every so often your compiler would wonder about the size of the miniature sheet in the folder in relation to the normal unmounted versions available from the exhibition, Post Office counters and the philatelic bureau. He had a hunch that this could be an oversized version exclusively cut for the folder.

Well, the self-adhesive sealing tape used to stick the grey mount around the MS has now perished sufficiently to enable it to be removed without physically damaging the sheet or the folder. (The MS is stuck to its backing paper, so is not u/m.)

Lo and behold it IS oversized! The normal MS measures 122mm wide x 90mm tall, while this presentation version comes in at 132mm wide x 100mm tall. Few copies of this variant will exist.

This may not be earth-shattering, but it is another instance of why it is important to examine what you own and not to assume anything. ☒



Life-sized version of the larger miniature sheet.

The red dotted rule represents the outer dimensions of the normally issued version.



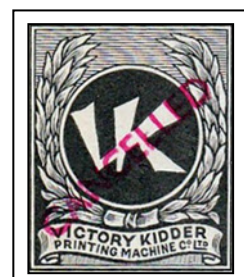
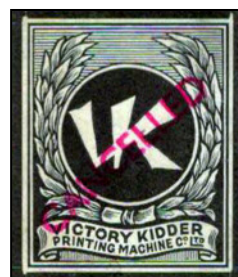
# Royal Mint Trial Plate and Victory Kidder Printing Machine Company Dummy Stamps Discovered

*Exciting new material comes to light after many decades of being hidden away in a private family archive*

Stanley Gibbons Ltd and Andrew G Lajer appear to be the only two stamp dealers who originally handled the personal archive of H A Richardson, a Royal Mint engraver. Mr Richardson was given a presentation album by the Royal Mint upon his retirement and it is this unique proof material that has recently been offered for sale.



Example not  
seen in a  
"cleared"  
condition.



## Royal Mint

## Victory Kidder

The left-hand examples of each pair above are termed "uncleared", that is to say the margins are ink receptive (black in this case).

The right-hand example is "cleared" of ink, as would be the case with most issued stamps.

Stanley Gibbons appear to have acquired for sale the British 1929 Postal Union Congress low-value commemoratives, postage dues and definitives and New Zealand Arms issued stamp material, while Andrew Lajer had the material that is more relevant to these pages such as that depicted below and overleaf, plus revenues, coat of arms proofs and the like. Incidentally, the red CANCELLED handstamp is understood to have been applied to all items at the time of the compilation of the album.

The most recent item appears to be 1950, so it is assumed that Mr Richardson must have retired after this time, but perhaps surprisingly nothing further has been found regarding this skilled letterpress engraver.

It would be great to have more information on the man and his work, especially these dummy stamps of course. The Royal Mint has been approached in order to get more information and a reply is awaited from them. In the meantime, can any reader add to our story, please? ☒

## Royal Mint Trial Plate ~ 1931



(left) Vertical pair worded "Matrix for Roller 2 Set".  
UNCLEARED MARGINS. Sold for £150.

(above) Block of 12 (two rows of six) worded "Curved Steel Segment".  
UNCLEARED MARGINS. On sale for £900.



## Royal Mint Trial Plate and Victory Kidder Printing Machine Company Dummy Stamps Discovered (continued)

### Victory Kidder Printing Machine Company ~ 1933



(above)  
Cut down die proof of  
the dummy stamp over-  
printed "CANCELLED"  
in red.

UNCLEARED  
MARGINS.  
Sold for £75.



(left) Vertical pair worded "Matrix for Roller 2 Set".  
UNCLEARED MARGINS. Sold for £150.



(above) Block of 12 (two rows of six) worded "Curved Steel  
Segment". CLEARED MARGINS. On sale for £900.

## Harrison's Specimen Handstamp

*Sales of early Palestine specimens*

An overseas auction house recently offered for sale Palestinian stamps with a Harrison Specimen handstamp. The description read:

"#65TC, 67TC, 73TC, 79TC, 1927 4m, 5m, 10m and 90M Pictorial trial colours with "Harrison's / Specimen" overprint, the four different designs complete in grey, olive, grey-blue and pale ultramarine respectively, all are well centred and attractive, regummed, very fine and a very rare set; illustrated in Bale catalogue page 120 (SG 92TC, 93TC, 97TC, 101TC). Estimate \$400-500."

The progress of the sale was not monitored, so it is not known what the sale price was, or indeed if the items remained unsold. Similar items on offer elsewhere recently had a starting price of £180 for each stamp.



Enlargement of the specimen handstamp.



## *Intaglio Colour Standards from Brads, DLR, Harrison and Waterlow*

*Pick a colour....*

The colour standard books shown on the following pages are indicative of what the printers made available to its customers on loan to help them choose appropriate colours for their recess stamps, banknotes and bearer securities.

All copies of the books should have been returned to the printer after use but it is clear that this was not always the case.

As expected, the dummy sheets are fine examples of what the engraver and printer could achieve from the one-colour intaglio printing process. ☒

### Bradbury, Wilkinson & Co Ltd

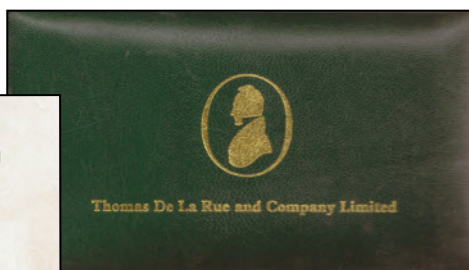
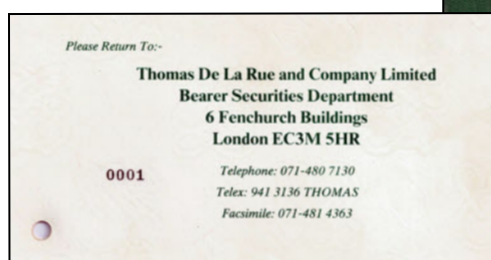


Unprinted bound blue buckram cover.

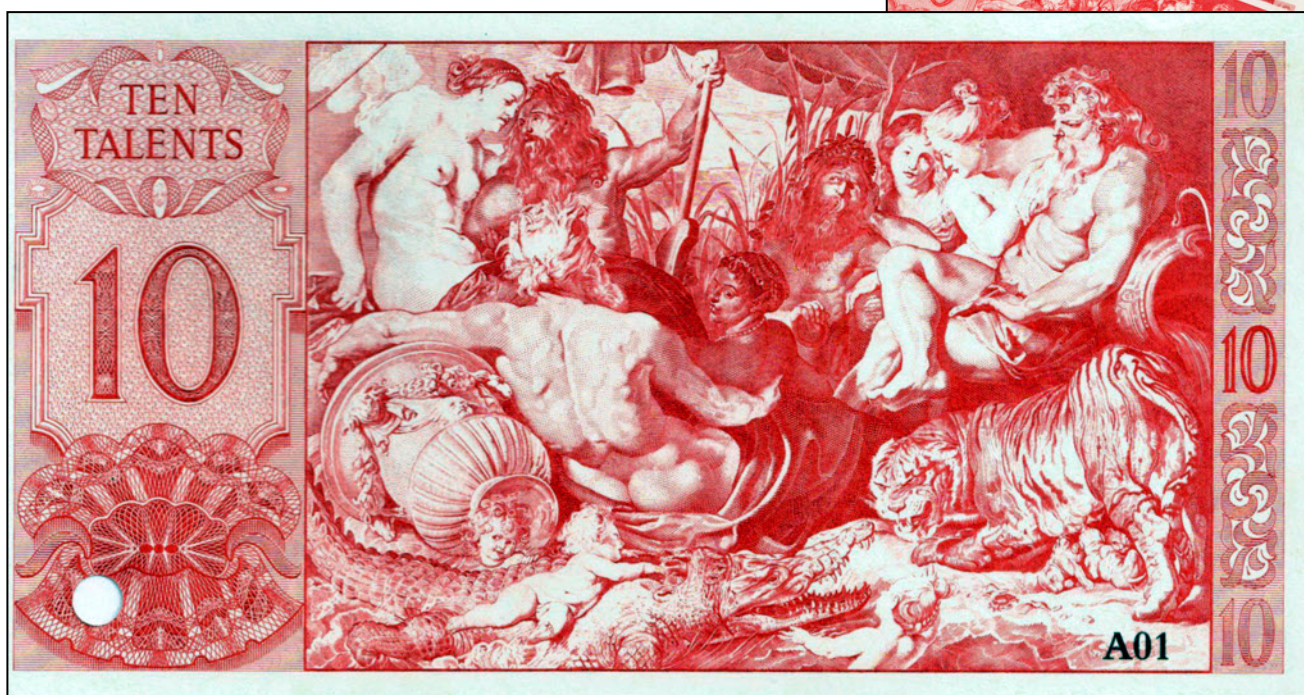
(right) Typical intaglio sample from within.



### De La Rue & Co Ltd

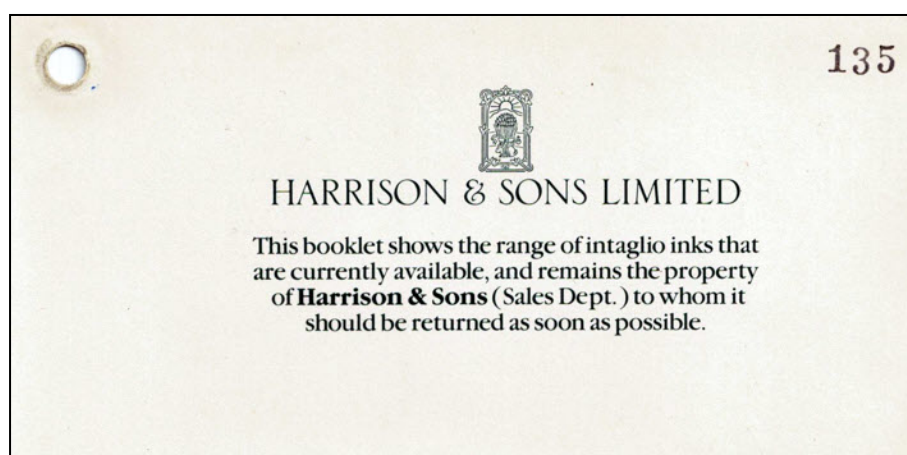


(above left) Introductory page.  
(middle) Green and gold plastic cover.  
(far right) A range of the booklet colours.  
(below) Typical intaglio colour sample.

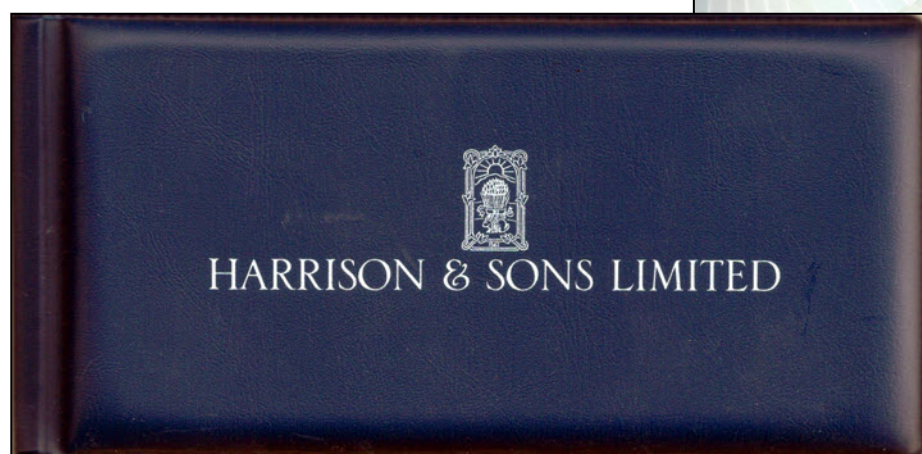




# Harrison and Sons Ltd



(top) Typical intaglio colour sample.  
 (above) Introductory page.  
 (far right) A range of the booklet colours.  
 (below) Blue and silver plastic cover.

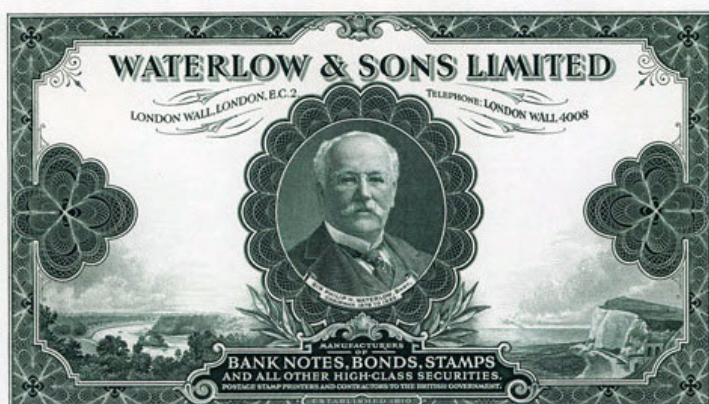




## Waterlow and Sons Ltd

Waterlow, with its many decades of security printing behind it, perhaps not surprisingly had also used colour standard sheets.

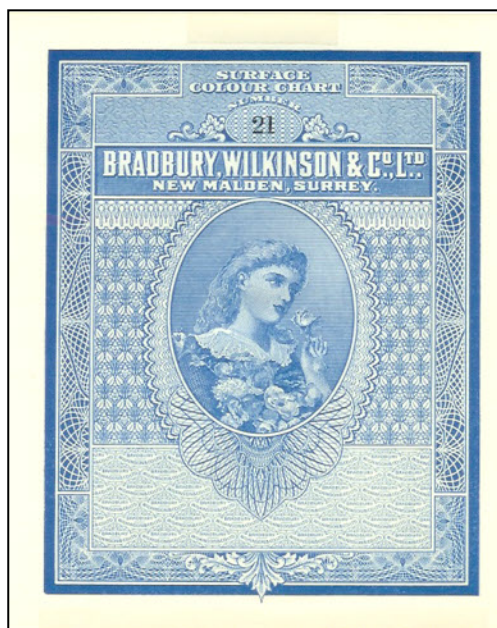
However, it also produced advertising notes in two or more colours of these (and many other) designs...



...Those sample sheets with more than one ink colour were not used for the purpose of matching colours or for offering inks to its extensive number of customers around the world. ☒

## *Surface and Litho Colour Standards from Bradbury, Wilkinson*

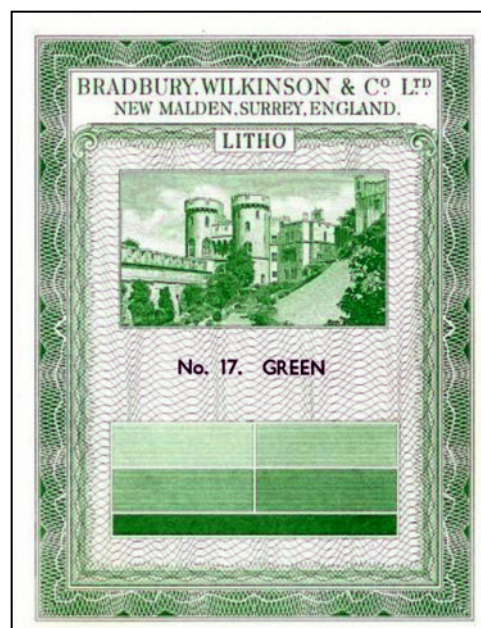
*As used by staff to help their customers choose ink colours and to match them accurately on press*



The previous feature showed intaglio printing ink samples.

Bradbury, Wilkinson also produced similar books of colour standards for its relief (surface) and lithographic printing ink range. These charts are encountered far less than the intaglio ones.

Relief and litho items from other well-known British security printers have not been seen by your compiler, but may, of course, exist. ☒





## 1996 IMP (Integrated Mail Processor) Test Cancellations

Samples of technology from Royal Mail and AEG surface

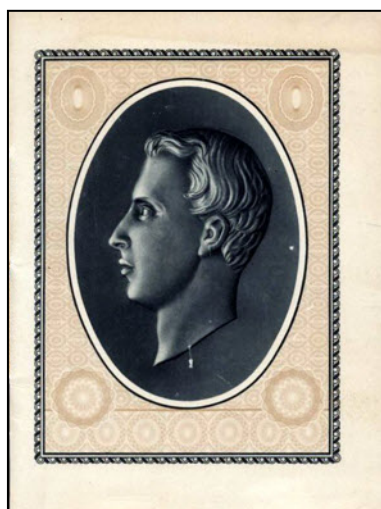
Excuse the poor auction photographs, but the two cancellations shown here bear the phrases: office\_line\_1 and ...



... office\_line\_2 in place of the name of a real Mail Centre. A mere handful exist according to vendor. ☐

## Harrison Feedback

More items come to light



A reader has kindly sent in scans of items mentioned in DS33. These include the large block of 16 of the Thomas Richard Harrison design in red. Not all copies had this block.

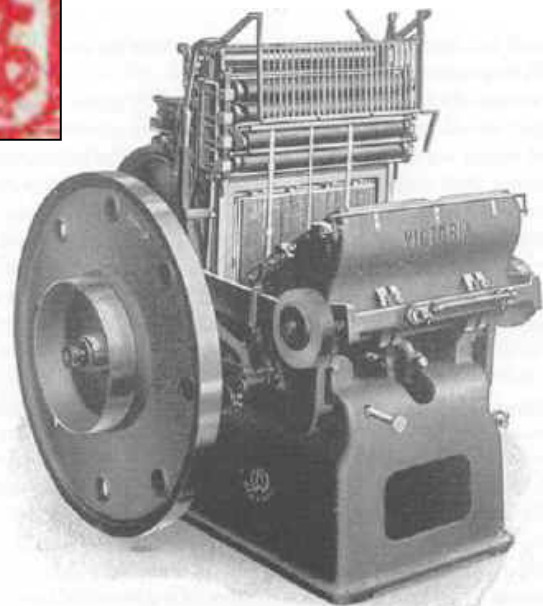
A copy of a left hand margin single of the same design was also supplied. Note the extra large margin, but no sign of any perforations at left hand vertical edge.

Also submitted was a block of 15 of the Springbok design in red. A similar sized block was shown last time in blue, but the red is of the smaller format. ☐



## The Victoria Platen Printing Press Revisited

New colours surface following mention in DS33



A reader generously gave your compiler the above two previously unrecorded colours of the dummy stamp that depicts the Victoria platen printing press.

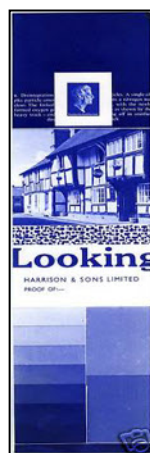
The labels have the letters **R** and **S** intertwined at top left and top right. It is assumed that these stand for Rockstroh-Werke of Germany. ☒

## Harrison & Sons Paper Testing at Wycombe

Proof as to why Ye Olde Worlde Tea Shoppe sheets headed-up "Looking" exist

The sheets alongside are occasionally offered for sale, largely, it seems, in blue, plum or magenta colours. Going through a *Harrison Papers* brochure recently, the magenta sheet was seen in use on a mini-web (reel) undergoing laboratory tests.

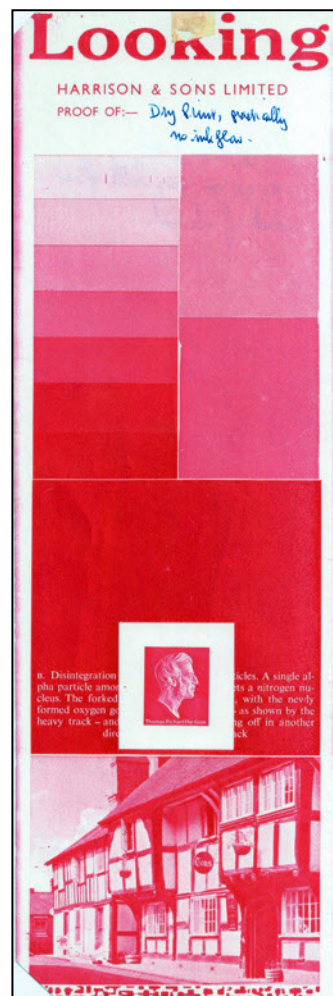
The brochure stated: "During production every reel of paper is subjected to detailed quality control checks and UV examination, including tests on substance, adhesion, moisture content, printability and where applicable, luminescence. Supplied either in reels or guillotine trimmed sheets, the finished product is hand sorted and thoroughly checked before leaving the factory." ☒



(left)  
Blue sheet.

(below)  
Uncut double sheet in magenta with two layouts.

(right)  
Enlarged copy of a single magenta sheet.






## EBay Rubbish Continues to be Offered

Your compiler cannot tell you how to spend your money, but at least spend it armed with the facts


eBay sites around the world continue to offer dubious British Post Office training material for sale, especially commemoratives of late.

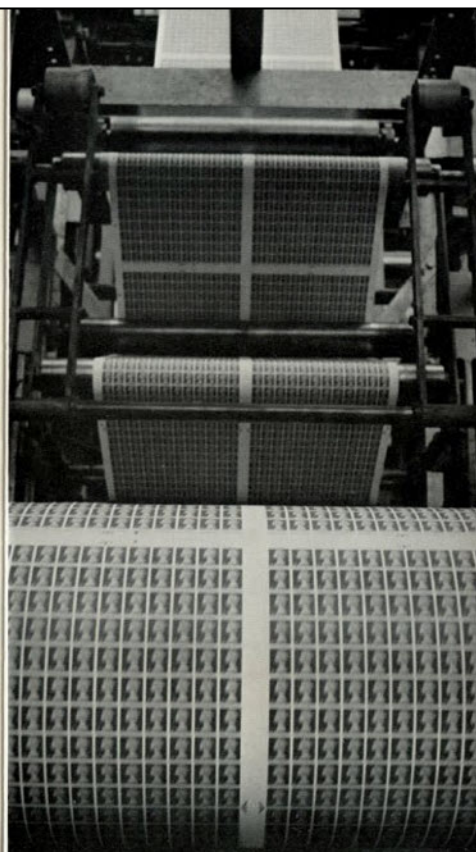
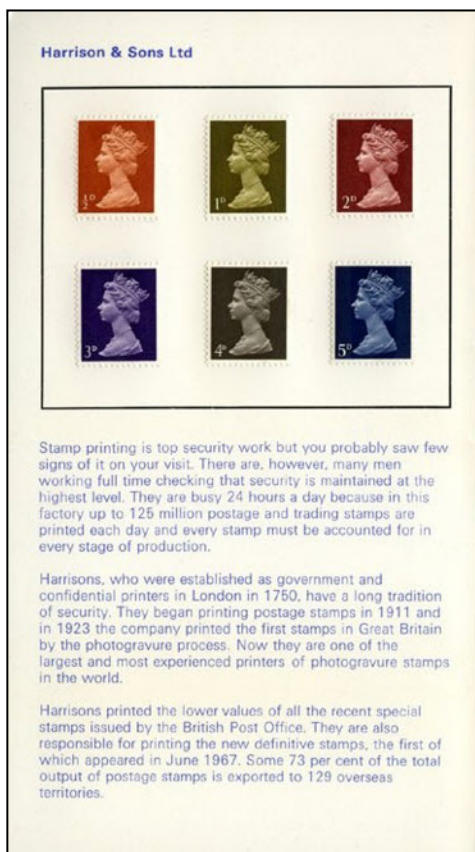
The prices are generally extortionate (£16+) for stamps of little basic value and there is an increasing trend to use even less valuable used stamps, such as the *National Nature Week* stamp shown below. 



## Harrison Presentation Folder for visitors to the Wycombe Site

Previously unseen folder surfaces on eBay. It sold for £52

The stamps are stuck down with-  
in this late 1960s item. 



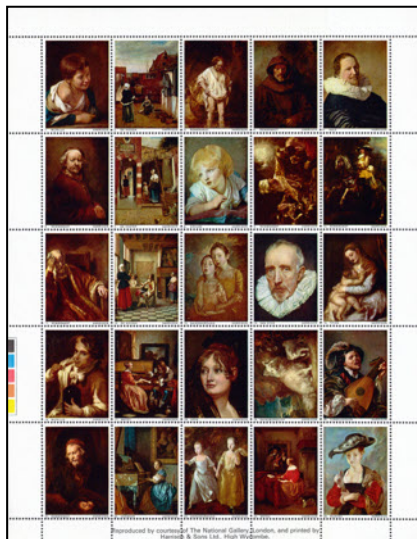


## Harrison's Old Masters Sheet

Time to revise its issue date!

In the Winter 1968 issue of *Harrison Forme*, the house journal of Harrison, mention was made of what has to be the well known sheet of dummy stamps issued with and without the London 1980 logo in its margin.

As the show sheet appeared in 1980, it had always been assumed that the version without the logo had appeared at around the same time. Clearly it had not and a previously recorded issue date of 'late 1970's' needs to now read 1968 instead.



## Charity stamps for the Netherlands

For the first time ever, 25 different paintings have been reproduced in postage stamp size on a single sheet. The order was initiated by Mr S Olman and placed by Mr Van Nordwijk. The three million stamps will be issued for a charity promotion in the Netherlands.

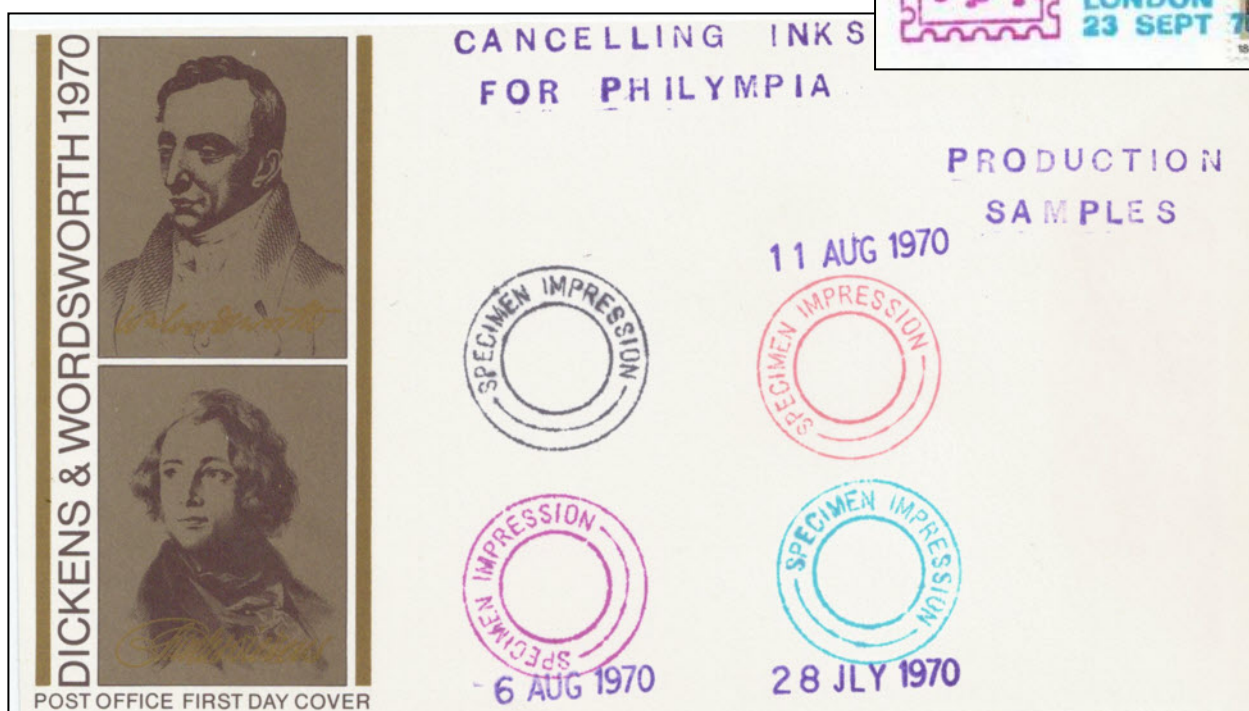
The original paintings are all in the National Gallery and include works by well-known Dutch artists. They were carefully chosen by Wycombe's works director Mr R F York and process manager Mr Stan Gray so that they could be printed together on one sheet using the same five colours.

The 'Mr Olman' referred to above has not yet been identified, but 'Mr Van Nordwijk' is known to have been Harrison's "man on the ground" in the Netherlands. 120,000 sheets were printed; a nice order for the litho section at Hayes and a beautiful sheet. ☐

## Philympia Cancelling Ink Trials

Trials for three-colour handstamps undertaken

Philympia 1970 utilised a different special handstamp for each day of the show. Unusually, they were struck in three different colours per handstamp and this had only been done once before at, if memory serves your compiler, Chippenham some years previously at a stamp show. Trials of the ink were undertaken using a SPECIMEN IMPRESSION handstamp. ☐



(above)

The finished result, as used on 23 September 1970.

(left)

One of a pair of similar covers with production samples of the special handstamp ink used on Philympia covers.



## Stephen Mayer International ~ Update to CPE Information

Sheet size of this printing now known

The Australian block of four labels produced by CPE were printed in sheets of 120 (10 rows of 12 labels), i.e. 30 blocks of 4, and had no marginal markings at all. ☒

## Wharfedale Machines Once Cancelled Stamp Printing Waste at Harrison & Sons

Evidence that horizontal lines were not for training use

The Harrison factory tour page information recorded earlier in this issue of *Dummy Stamps* makes mention on page 2 under 'Printing Machines' of "Two small Wharfedale machines for cancelling waste sheets - note black lines across sheets".

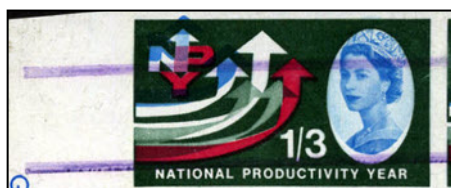
Note how the notes state *across* sheets, therefore differentiating them from the vertical Post Office training stamp tram lines.

While it will now probably be hard to prove, it is reasonable to assume that the well-known 1960's waste sheets will have been obliterated by these Wharfedale presses, in violet as well as the black ink mentioned.

The scans shown here are typical examples



of the kind of defacement that is known from this time period.



The POSB issue was printed side-ways onto the sheet and so gives the appearance of having vertical training bar lines, but these were horizontally applied. ☒

## Bruckman King Edward VII One-Penny Varieties

Unusual combinations recently found

Readers will be familiar with the trial printings of the KEVII 1d by the German firm of Bruckman.

Shown below are unusual imperforate items with correct-way reading and mirror reading and it is not thought that this particular combination has been recorded previously.



The above pair was offered for £95, while at the same time another dealer was selling the strip of three depicted here at £300. ☒

## ...and finally

I always welcome details of new dummy finds from printers past and present, and so invite you to write via my Guest Book at [stampprinters.info/guestbook.htm](http://stampprinters.info/guestbook.htm), where requests to subscribe to *DS* can also be made.

Business, family and other commitments to the hobby mean that I cannot guarantee that I can rigidly stick to a publishing programme and therefore suggest that you visit [stampprinters.info/dummystamps.htm](http://stampprinters.info/dummystamps.htm) every so often where PDF files of this and all future and previous issues of *Dummy Stamps* will be available to download and print-off. Thank you. ☒

